

## A seamless PBM change?

It's easier than you think.

Employers have been switching to Optum Rx pharmacy benefit management for more than 20 years because they get value - well beyond a drug's price. And, because they can expect a smooth transition for their employees.

**We guarantee it.**

### Expert support

Our support teams bring the expertise and experience to keep your transition to Optum Rx steady at every step - for you and your employees, from planning through implementation and beyond.



### Here's how



**Governance** - You'll have an experienced program manager who oversees all aspects of planning and implementation.



**Communication** - You'll get regular updates on status, milestones and risk mitigation strategies.



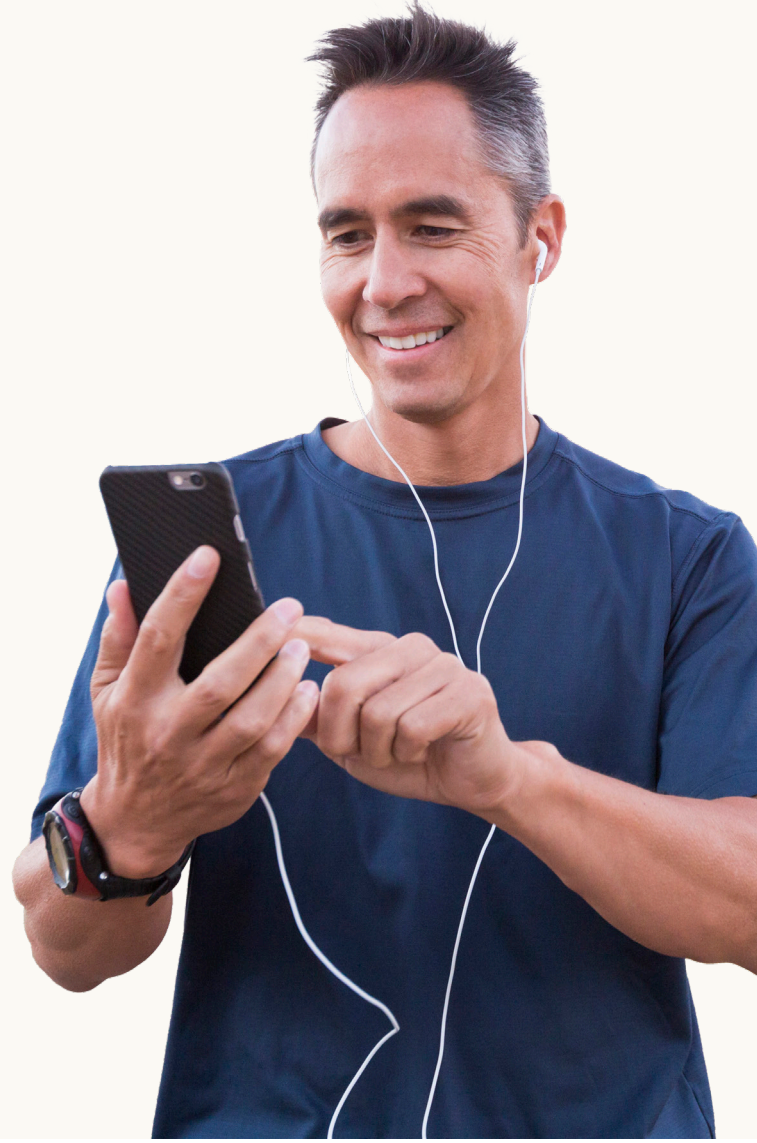
**Tracking** - We ensure all departments stick to the project plan.



**On-boarding** - Change doesn't have to be disruptive. Your employees get a seamless experience - supported by transition advocates.



**Go-live support** - Our command center watches for and quickly resolves any areas of concern.



**“Optum Rx’s implementation process was extremely thorough. The team was professional and very good at their job. This was the smoothest transition we have ever gone through.”**

- SVP of Benefits, Large Freight Line Employer Group

### Results: Proven results for 1/1/2024 new clients.

**100%** of client satisfaction guarantees met<sup>1</sup>

**100%** of performance guarantees met and \$0 paid out in 2021, 2022, 2023<sup>2</sup>

**13% reduction** in rejected claims - ensuring employees never run out of their medications<sup>3</sup>

**53% adherence** improvement with enhanced on-boarding - which supports better health<sup>4</sup>



See how easy your transition can be. Contact [OptumRx@Optum.com](mailto:OptumRx@Optum.com) today.

#### About Optum Rx

Optum Rx is a pharmacy care services company helping clients and more than 60 million members achieve better health outcomes and lower overall costs through innovative prescription drug benefits services.

#### References

1. Optum Rx, 1/1/24 commercial client implementation data.

2. Ibid.

3. Members onboarding 1/1/21 who participated in the Enhanced Onboarding Program saw a 13% reduction rejects at the retail pharmacy counter.

4. Results of 1/1/21 program compared to control group.