



Meet community health care needs with mobile solutions

COVID-19 has challenged us to think differently, prioritizing agility to create operating models that pivot as needed.

We assemble clinical teams quickly, all across the country, for emergent and nonemergent health event needs. We coordinate testing and vaccination sites to meet the needs of various communities. Our new fleet of medical-grade mobile units can provide primary care, urgent care, vaccinations, dentistry and more, using state of the art technology to be entirely remote in rural or urban locations. We work with you to create a community-based health care strategy to bring the right resources conveniently to your population – treating people where they are.



Small Mobile Medical Units are smaller mobile health care solutions offering electrical power, air-conditioned spaces and medical grade storage.

- 25-foot, dual axle trailer movable by standard truck
- Medical grade refrigerator, capacity of 600 vials
- Environmentally controlled for inside workspace
- Powered by external generator or shore power
- Useful weight capacity of 2,300 lbs.
- Cabinetry, counter space for 2 prep stations and stools
- Manual pump handwashing station
- Storage for tents and chairs during travel
- Insulated roof for optimal temperature control
- Base for public health event, disaster site ops
- Biometric Monitoring station for First Responder rest and rehab
- Smaller trailers can be moved with a full-sized pickup truck saving on transportation costs

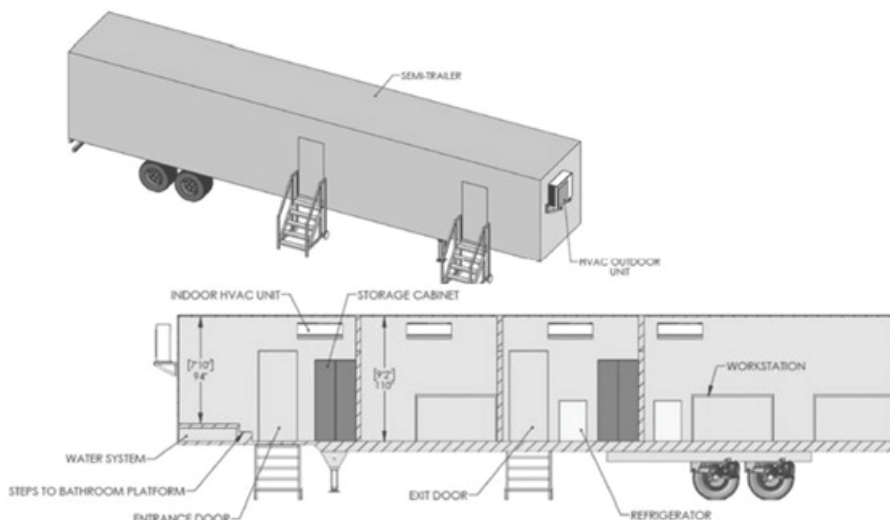
Can be deployed within 24 hours from NC, MI and CA

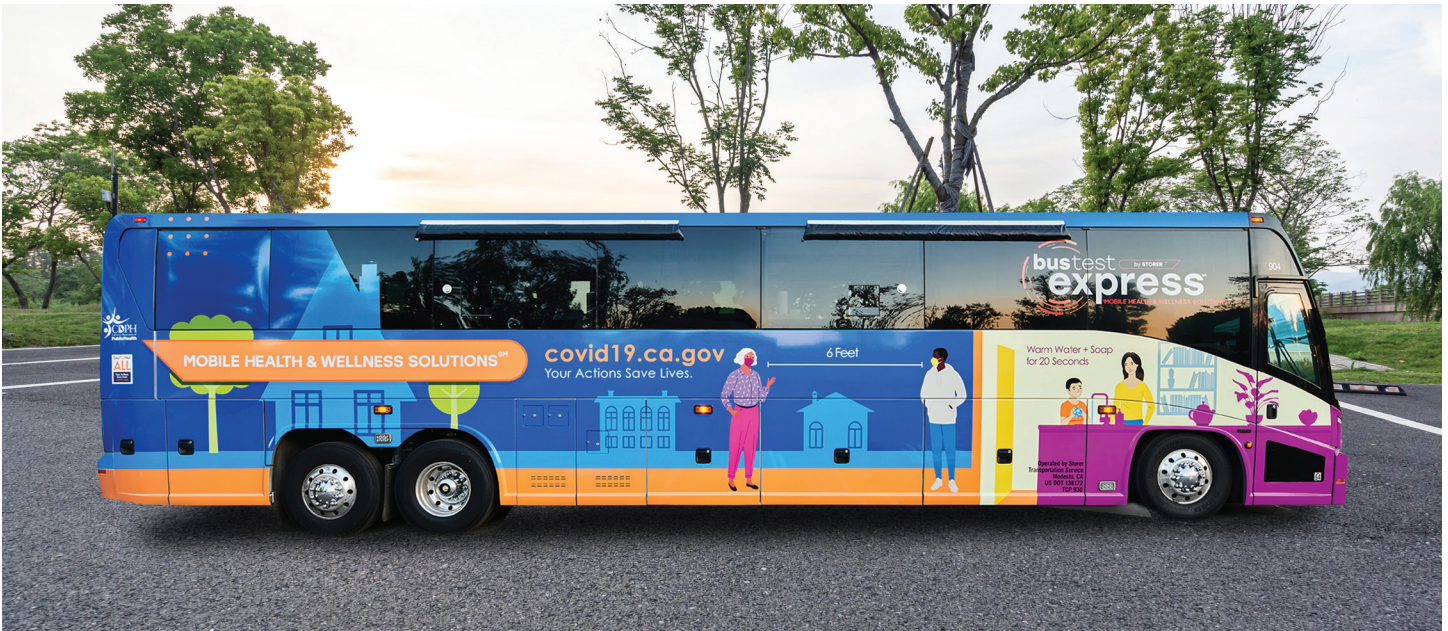


Large Mobile Medical Units are the largest, most capable mobile health care solution Optum Serve offers with austere telecommunications, long-term power generation, air-conditioned spaces, 4 separate treatment spaces with a 4,400 lb. stretcher/cargo lift capability at the rear.

- 53-foot, highway box trailers movable by semi-tractor, CDL required. W: 8'-6", H: 13'-6"
- 2 refrigerators, 1 freezer; all medical grade
- Environmental controls for each of 4 rooms
- Generator: 15 KW, 120/240V gasoline/propane
- 50-gallon gasoline tank, 48-gallon freshwater
- TOUGHSAT satellite system and austere comms
- VoIP phones, telehealth video and audio comms
- Lift gate, two stretchers capable, cap 4,400 lbs.
- Shore power input for connection to fixed site
- Plumbed, pressurized sinks and toilet, hot water
- Gray and black water storage
- Mobile clinic with 3 treatment areas and admin room
- Large wall cabinets in each room for storage
- Electrical outlets throughout the rooms
- Portable stairs (2) for right-side entry doors
- Smoke and fire detection system

Can be deployed within 72-96 hours from NC





Bus-based medical facility features a 26-foot mini-bus and 45-foot motorcoach that provide health care professionals with self-contained and truly mobile medical spaces. With vaccination services windows, testing service windows, exam rooms, bunk room and more, we're fully equipped to successfully support communities.

- Includes electricity, water, wet waste and dry waste
- Vehicle heating and air conditioning
- Electrical outlets: 110 volt throughout coach
- Commercial Wi-Fi for laptops and printers
- Onboard fuel-efficient generator
- Air filtration system with Merv8 filters
- Full-service vehicle maintenance in all 50 states
- Professional, commercial certified drivers with DOT medical exam certificates, and background check with drug and alcohol screen
- Site setup and take down
- Whole bus sanitation and nightly deep cleaning
- Mobile operations, infrastructure and logistics

Can be deployed within 48 hours from NC and CA





Non-climate public health emergencies

Quick deployment for events such as infectious disease outbreaks, bioterrorism attacks, power issues, etc.



Emergent situations

Quick deployment when traditional care infrastructure has been impacted: hurricanes, wildfires, tornadoes, etc.



Vendor supported

Towing to site, technical maintenance of trailer, establishes satellite uplink and Wi-Fi network, gray and black water servicing, freshwater tank refill and drain, 4,400 lb. ramp operation, daily sanitation and cleaning.



School-required vaccinations

Support childhood immunizations, allowing children to return to school in response to many children missing the traditional school age vaccination schedule during the pandemic.



Additional health care space / flexible infrastructure

Support configurations inside fixed facilities, as well as operations that need additional space and security for health screenings and testing. Safe storage of supplies and improved personnel safety. One client currently utilizes our mini-bus, full-sized coach and small trailers for Test-to-Treat consultations.



Health care equity

Address health inequities for those in areas that are 'medical deserts,' meeting individuals where they are, especially populations in rural, minority and underserved communities that do not have adequate, permanent health infrastructure in their communities.



Border health

Provide general health care services for migrants and refugees in various locations.

Optum Serve delivers end-to-end capabilities

- Program management
- Provider network management
- Credentialing
- Provider training
- Logistics and distribution
- Mobile Command Center
- Industrial site health fairs
- Tailorable mobile med capability
- Health outreach to unsheltered people and families
- Occupational medicine on austere sites (coal mines, farm fields)
- Data management security
- Quality and medical review
- Customized reporting
- Mobile health care
- Mobile dental clinic
- Vaccinations
- COVID-19 vaccinations and testing
- Corporate community outreach
- Large event medicine (many levels)
- Specialized health care to medical deserts, women's health, preventative screenings and telehealth to faraway specialist providers

Optum Serve®

[optum.com](https://www.optumserve.com)

Optum is a registered trademark of Optum, Inc. in the U.S. and other jurisdictions. All other brand or product names are the property of their respective owners. Because we are continuously improving our products and services, Optum reserves the right to change specifications without prior notice. Optum is an equal opportunity employer.

© 2023 Optum, Inc. All rights reserved. WF9066453 01/23

For more information, contact us at:

osperservices@optumserve.com

<https://www.optumserve.com>