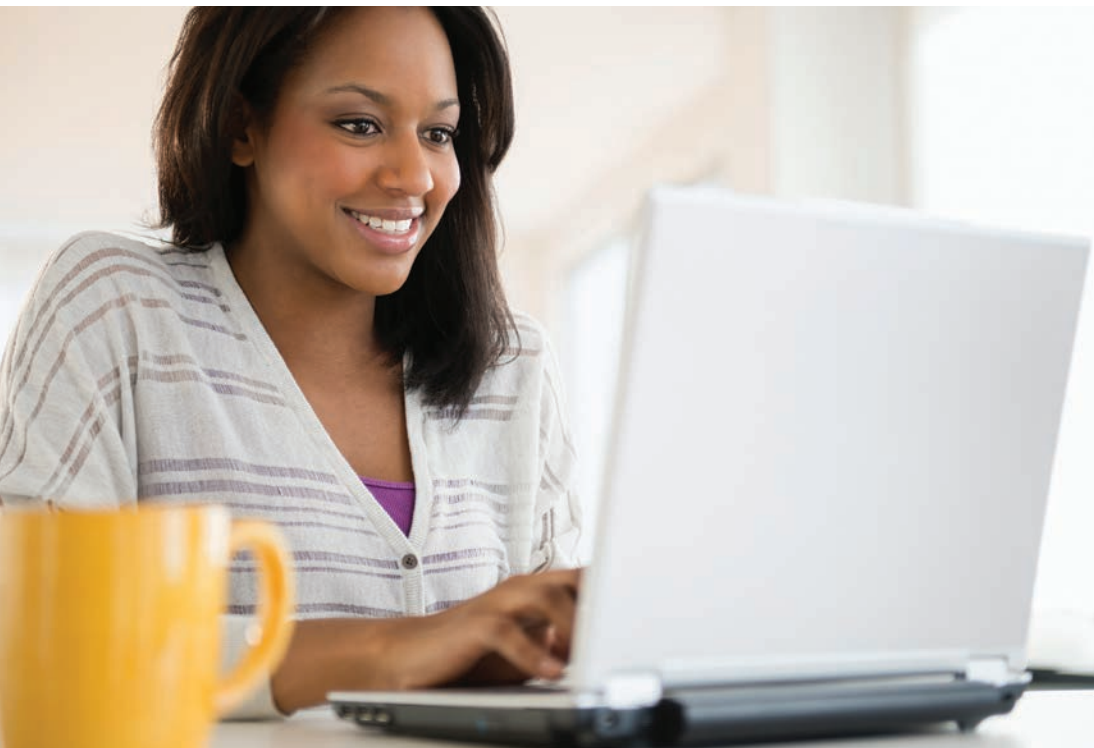




Know your options before making
a decision



Smart. Simple. Convenient.

Take the guesswork out of selecting health insurance, and learn how to save money and select the best plan for you.

Use **Coverage Advisor** to create individual or family profiles, estimate your annual health care use (e.g., doctor visits, prescriptions, etc.), model the HSA and/ or FSA contribution rates that will save you money, and compare the options and out-of-pocket costs for each health plan. And, when **Coverage Advisor** is paired with our best-in-class account-management site, expert customer service and convenient payment card, you get a great solution that not only supports healthier living, but also is good for your wallet.

Visit the online Optum Health Care Toolbox to access **Coverage Advisor** and other important decision support tools.



Have questions? We're here to help.
Contact us at **1-877-470-1771** or
mycdh.optum.com

All Optum trademarks and logos are owned by Optum, Inc. All other brand or product names are trademarks or registered marks of their respective owners. Because we are continuously improving our products and services, Optum reserves the right to change specifications without prior notice. Optum is an equal opportunity employer.

© 2015 Optum, Inc. All rights reserved. A14778 50686-092015